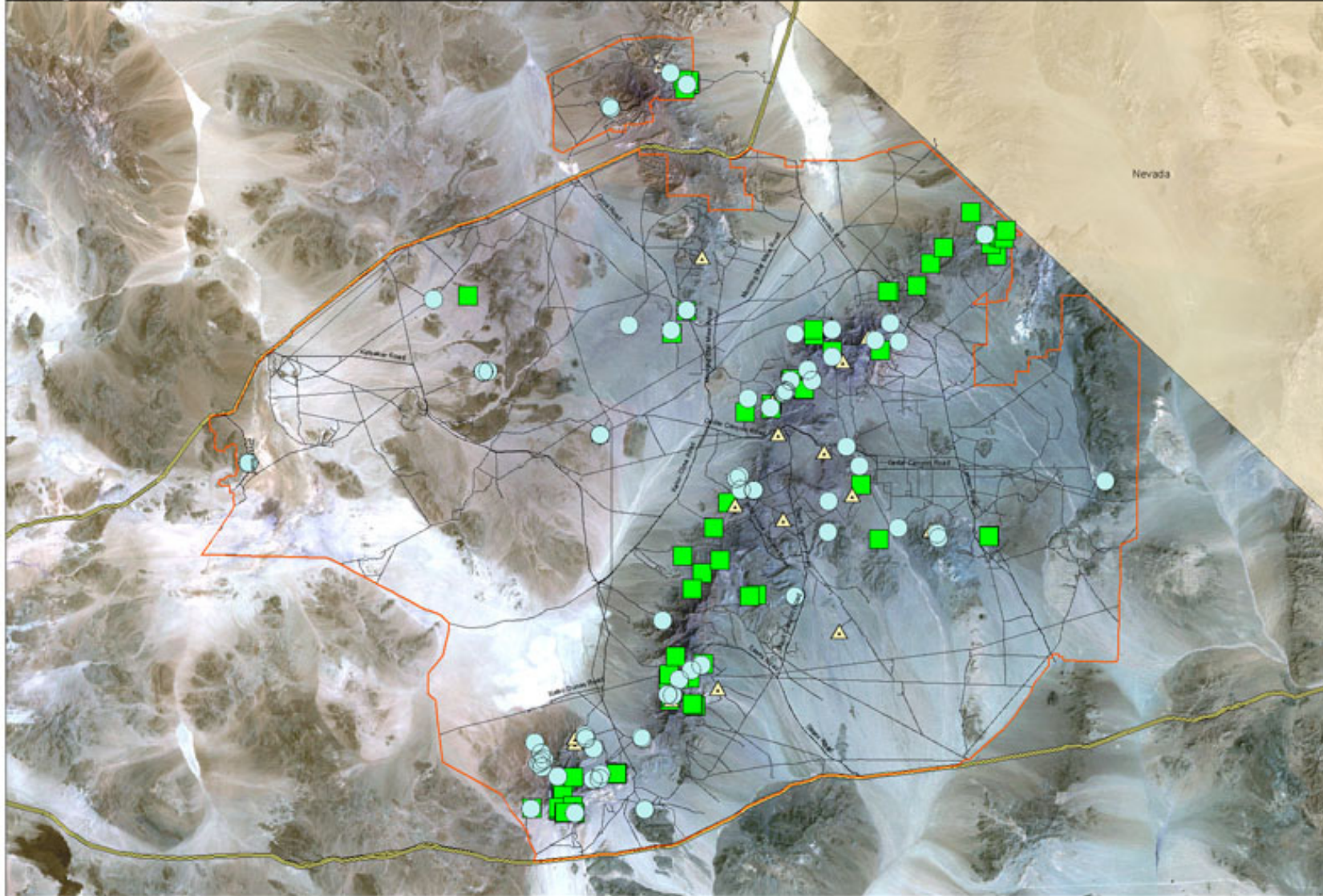


Annual Spring Survey for 2006

Mojave National Preserve

National Park Service
U.S. Department of the Interior



Legend

NPS Boundary

Condition of Each Spring

Wet

Dry

Unknown

INVENTORY STATISTICS

Wet Springs - 84 - 47.19%

Dry Springs - 22 - 12.36%

Unchecked - 72 - 40.45%

Total Springs - 178 - 100%



0 2.5 5 10 15 Miles

1:230,000